

4 | The Restoration History of the Bronze Apollo and Diana from Pompeii

Erik Risser and David Saunders

ILLUSTRATION CREDITS

Figs. 4.1, 4.2, 4.5–4.12, 4.15–4.26: J. Paul Getty Museum with permission from Soprintendenza Speciale per i Beni Archeologici di Napoli e Pompei

Fig. 4.3: Getty Research Institute, Los Angeles (85-B19893)

Fig. 4.4: Erik Risser, Michael Lira, and Clyde Crossan, J. Paul Getty Museum

Fig. 4.13: Getty Research Institute, Los Angeles (83-B6998)

Fig. 4.14: Getty Research Institute, Los Angeles (85-B25287)



FIGURE 4.1. Apollo Saettante, 100 B.C.–before A.D. 79.
Bronze, 147 × 55 × 114 cm (57⁷/₈ × 21⁵/₈ × 44⁷/₈ in.).
Naples, Museo Archeologico Nazionale (inv. 5629).
The statue is shown after conservation at the J. Paul
Getty Museum.

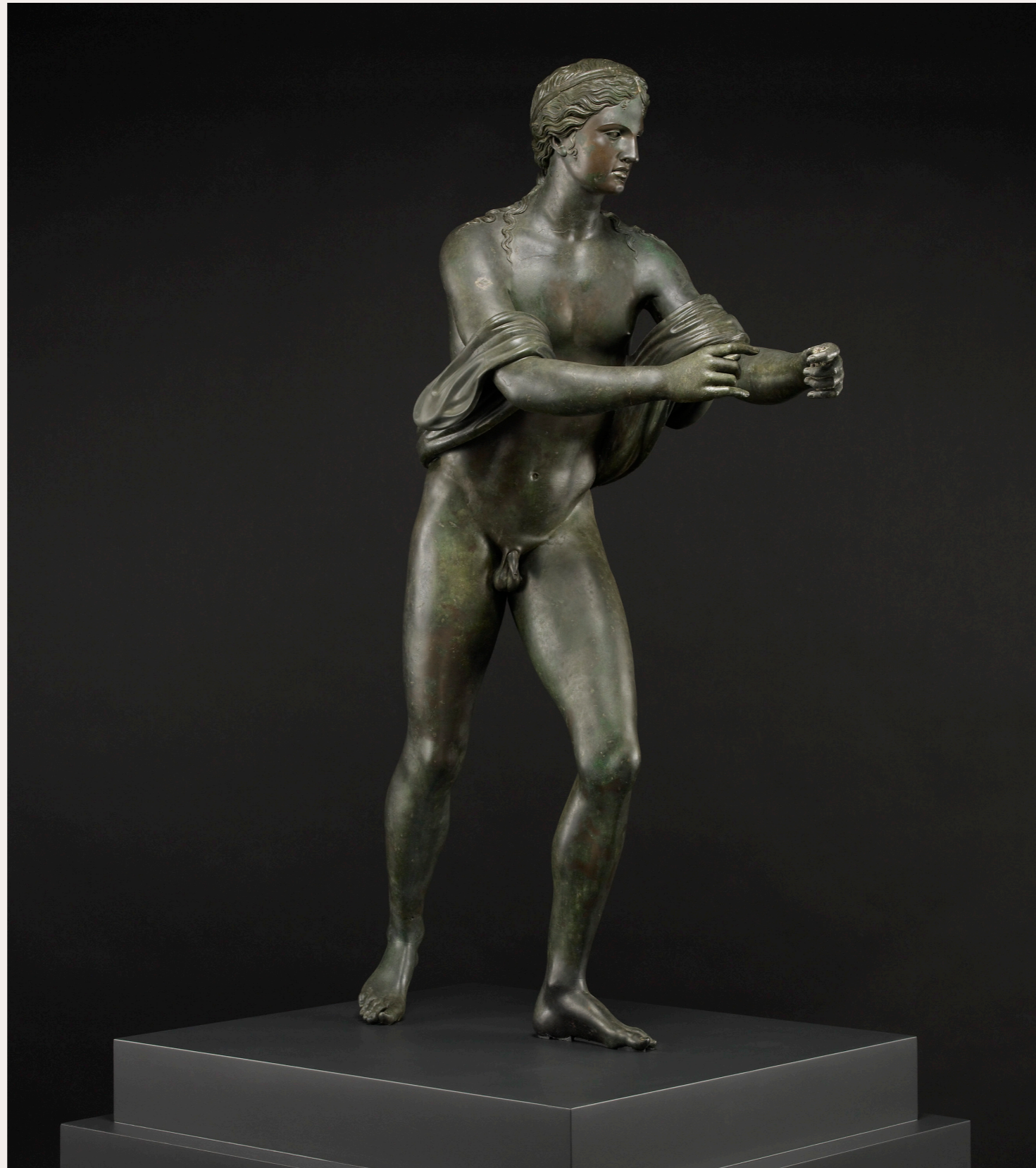


FIGURE 4.2. Diana, 100 B.C.–before A.D. 79. Bronze, 54 × 45 × 48 cm (21¼ × 17⅝ × 18⅞ in.). Naples, Museo Archeologico Nazionale (inv. 4895)



FIGURE 4.3. Unknown artist. Engraving from Raffaele Gargiulo, *Raccolta de monumenti più interessanti del Re. Museo Borbonico e di varie collezioni private* (Naples, 1825), pl. 10. Los Angeles, The Getty Research Institute

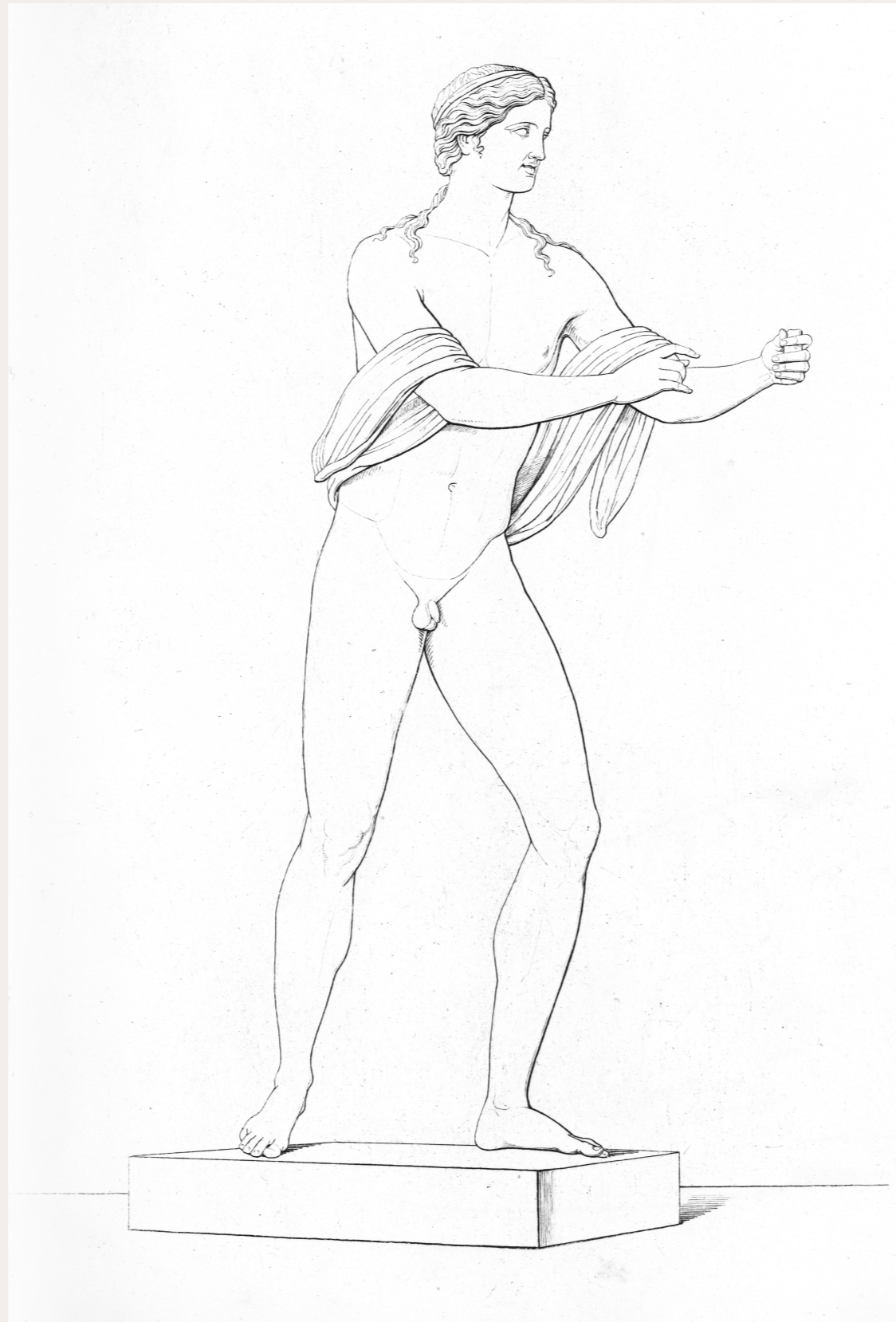


FIGURE 4.4. Schematic depiction of fragments of the Apollo Saettante



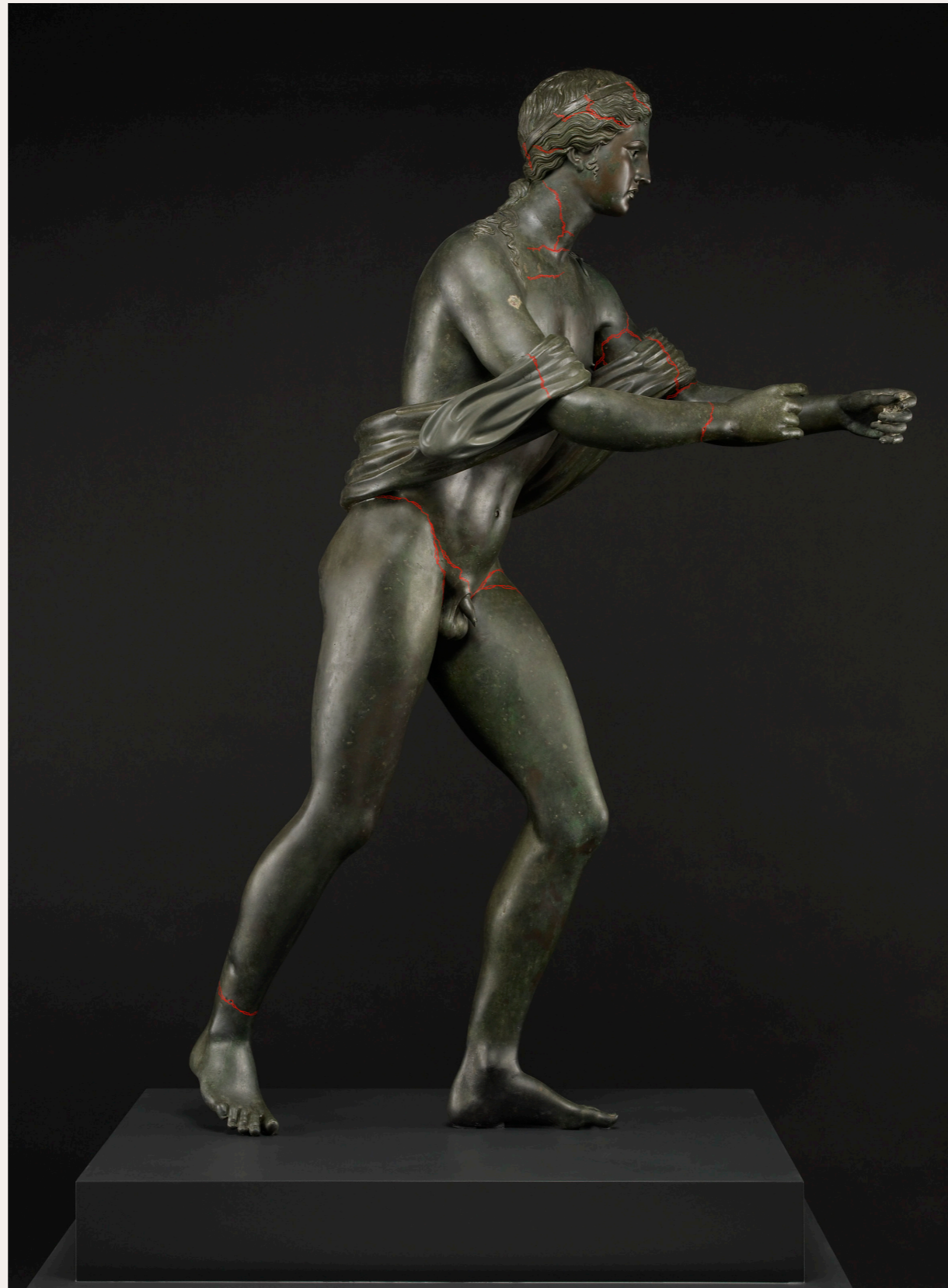


FIGURE 4.5. Apollo: digital rendering of cracks

FIGURE 4.6. Apollo: digital rendering of internal armature, and straps and screws.

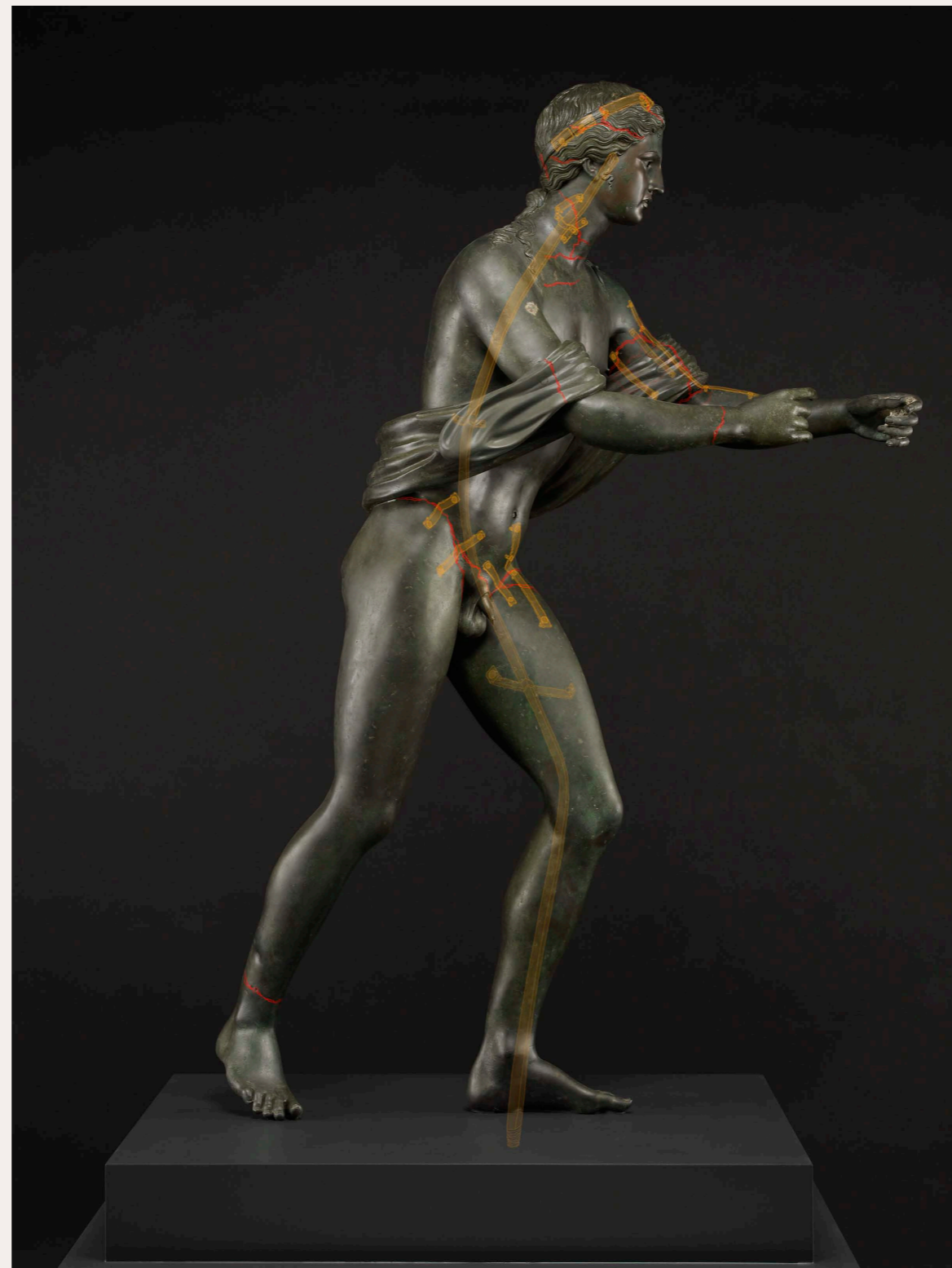


FIGURE 4.7. Apollo: digital rendering of straps and screws



FIGURE 4.8. Apollo: detail, X-ray of straps in left arm

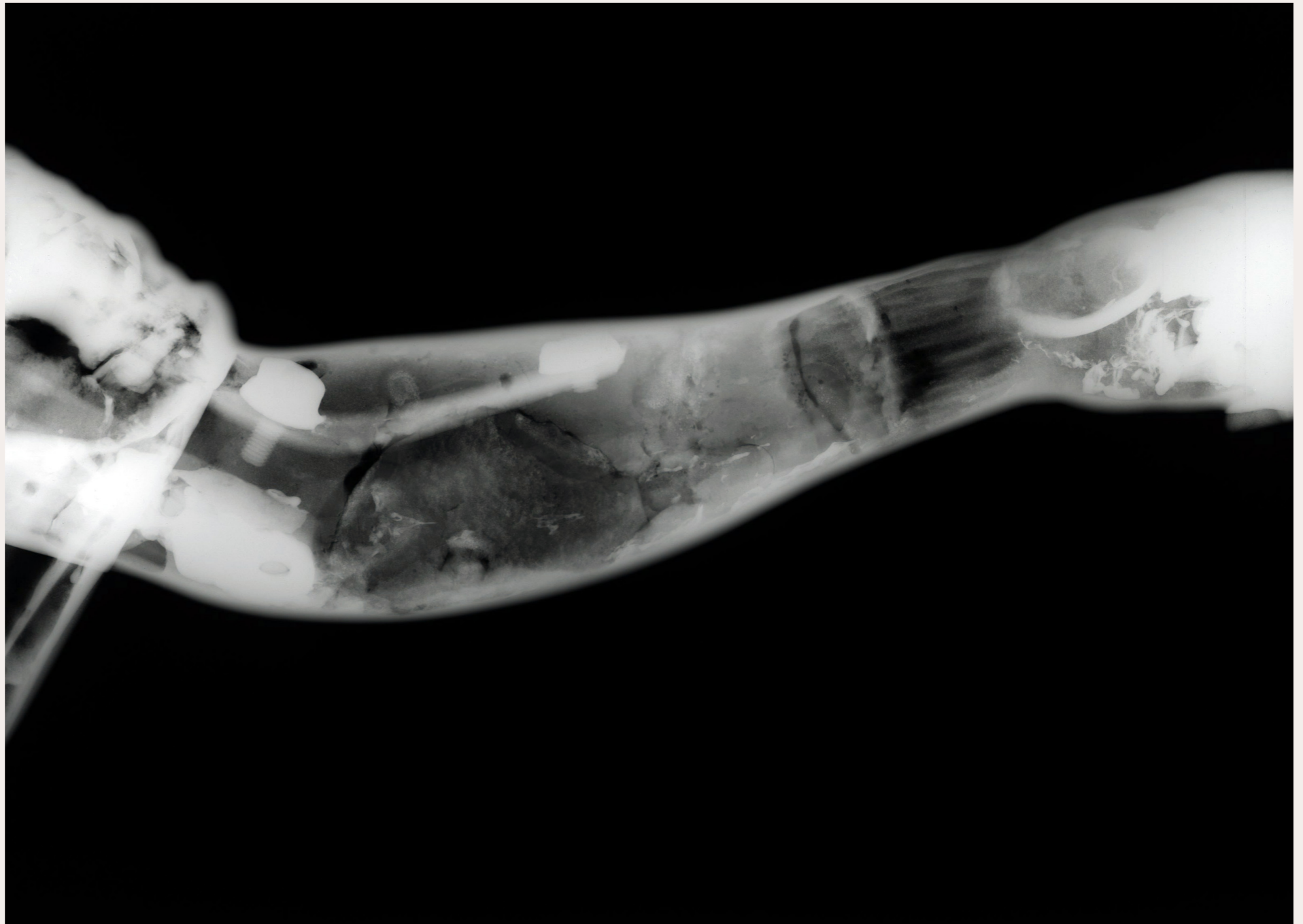




FIGURE 4.9. Apollo: detail of screw heads and ends in thigh

FIGURE 4.10. Apollo: digital rendering of internal armature, and straps and screws. This image also shows the later repair to the right ankle, as shown in figure 4.20.

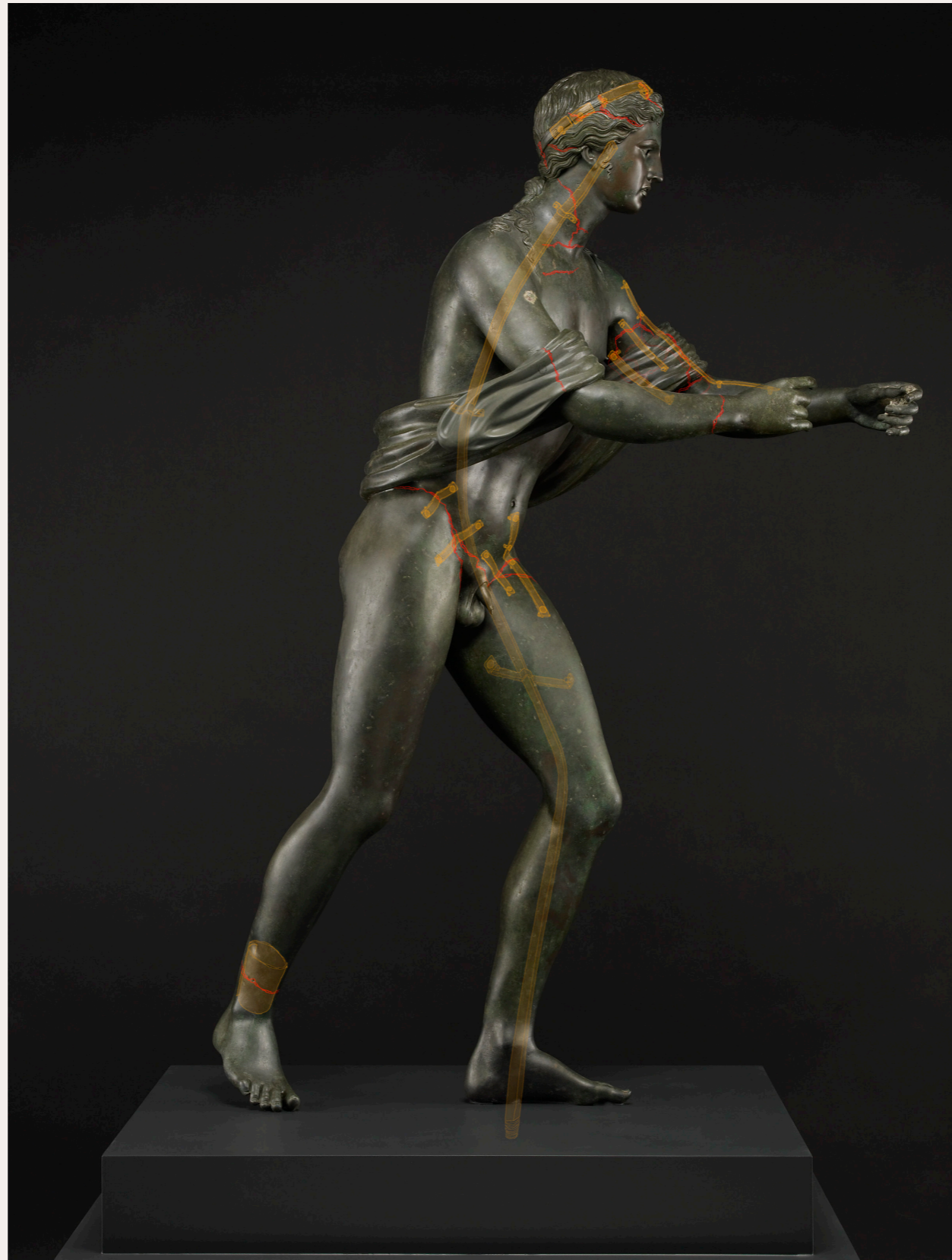


FIGURE 4.11. Apollo: detail of break edges at underside of left arm



FIGURE 4.12. Apollo: detail of left thigh, with nineteenth-century restoration patch removed during conservation to show break edges



FIGURE 4.13. Unknown artist. Engraving from *Real Museo Borbonico* (Naples, 1832), vol. 8, pl. 60. Los Angeles, The Getty Research Institute

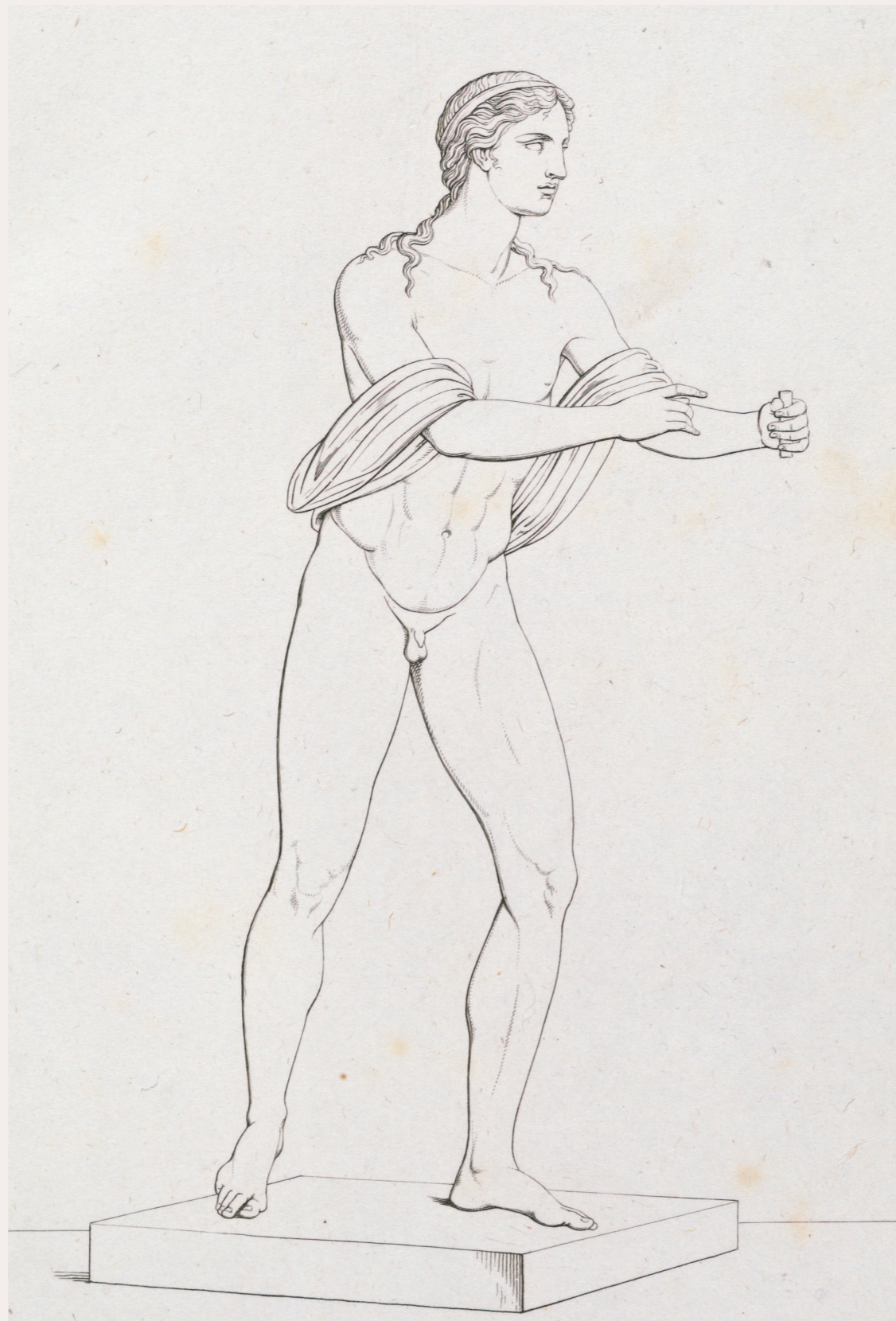


FIGURE 4.14. After Ferdinando Mori (Italian, 1782–1852). Engraving from Domenico Monaco, *Les monuments du Musée national de Naples...* (Naples, 1884), pl. 91. Los Angeles, The Getty Research Institute



FIGURE 4.15. Apollo: detail, endoscope photo to show interior corrosion





FIGURE 4.16. Apollo: detail of traces of rasps on surface

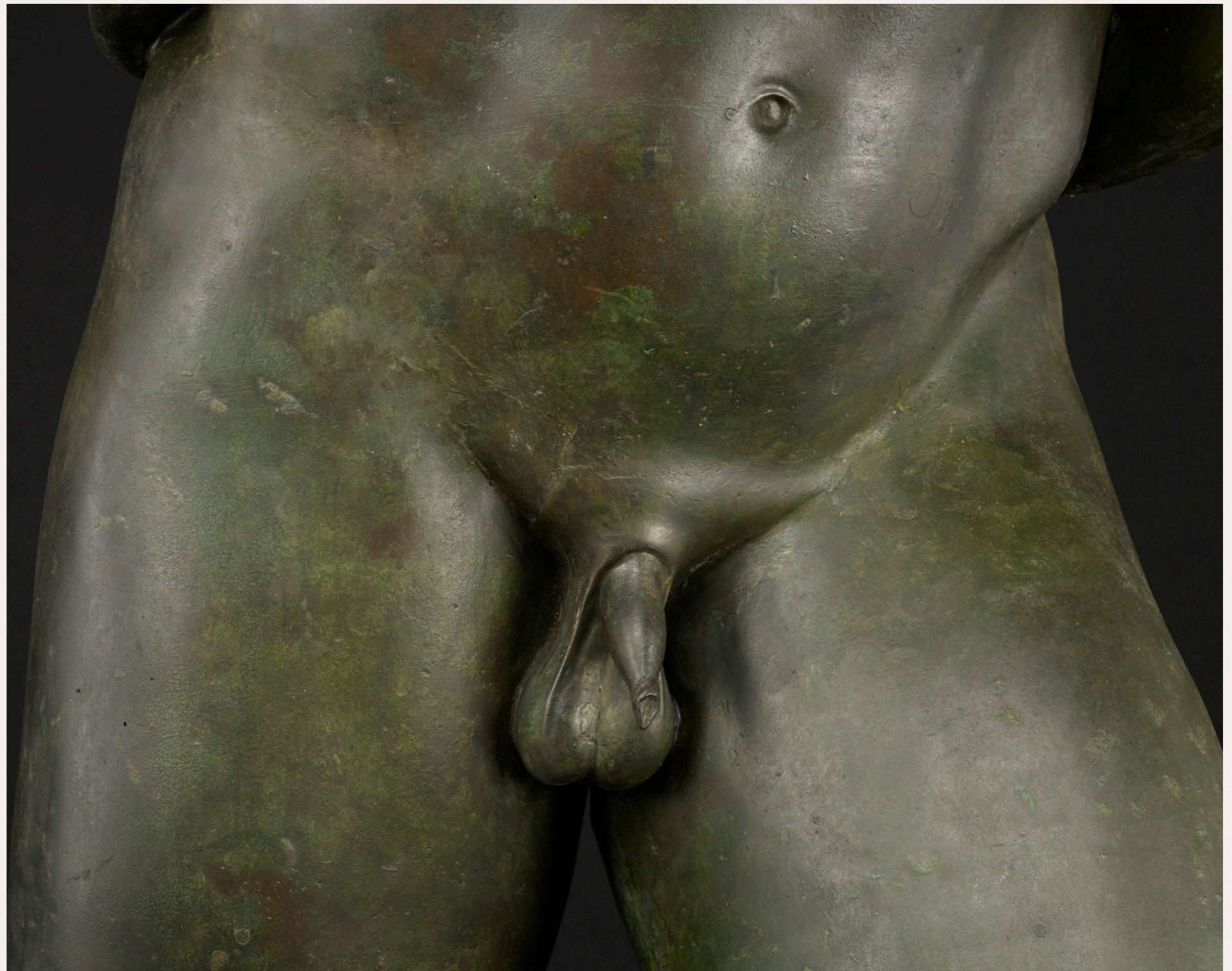


FIGURE 4.17. Apollo: detail of patinated surface

FIGURE 4.18. Apollo: detail of face showing areas of reddish-brown color

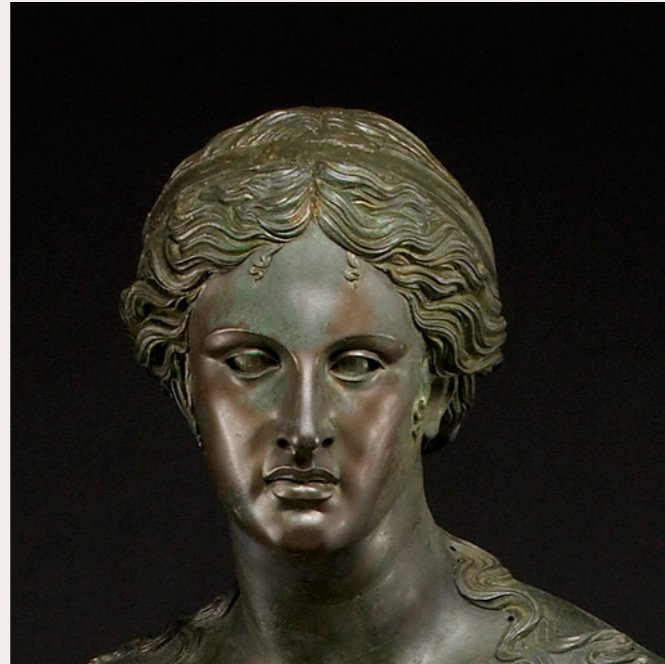


FIGURE 4.19. Apollo: detail of right ankle fracture, showing golden yellow color of exposed metal



FIGURE 4.20. Apollo: X-ray of right ankle, showing brass insertion



FIGURES 4.21a-b. Apollo prior to conservation at the Getty Museum, showing the bronze drapery ends



FIGURE 4.22. Apollo: detail of left arm with holes for screws



FIGURE 4.23. Diana: X-radiograph



FIGURE 4.24. Diana: endoscope photo of interior



FIGURE 4.25. Diana: detail showing rasp marks and traces of corrosion



FIGURE 4.26. Diana: frontal view

