

# 5 | The Ephebe from the Via dell'Abbondanza

## History of a Restoration

*Luigia Melillo*

### ILLUSTRATION CREDITS

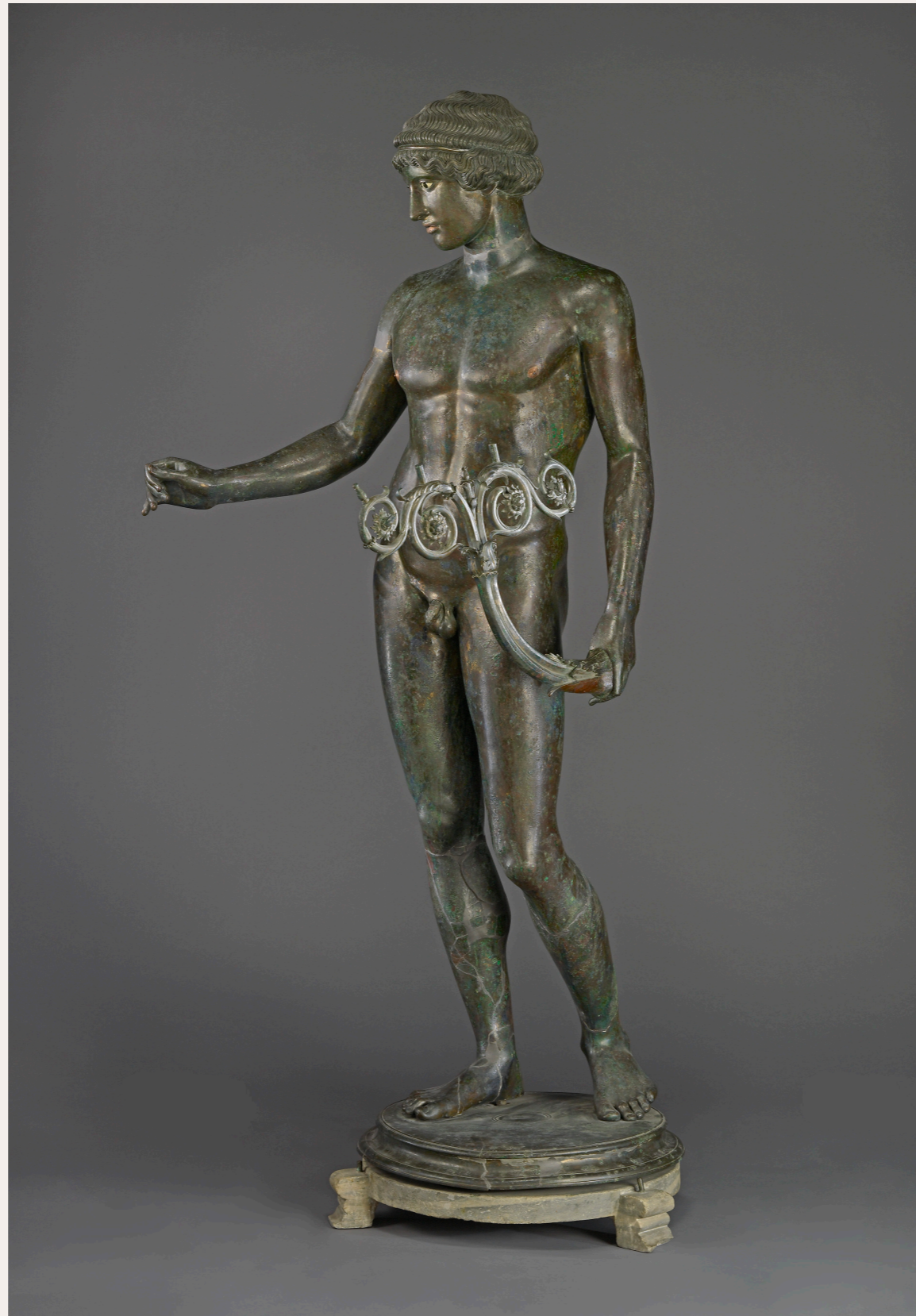
Fig. 5.1: J. Paul Getty Museum with permission from Soprintendenza Speciale per i Beni Archeologici di Napoli e Pompei

Figs. 5.2, 5.4, 5.6a-b: Soprintendenza Speciale per i Beni Archeologici di Napoli e Pompei, Archivio Fotografico

Figs. 5.3, 5.5, 5.7–5.20: Courtesy of the Laboratory for Conservation and Restoration at the National Archaeological Museum, Naples



**FIGURE 5.1.** The Ephebe from the Via dell'Abbondanza, 20–10 B.C. Bronze, 149 × 80 × 55 cm (58<sup>5</sup>/<sub>8</sub> × 31<sup>1</sup>/<sub>2</sub> × 21<sup>5</sup>/<sub>8</sub> in.). Naples, Museo Archeologico Nazionale (inv. 143753)



**FIGURE 5.2.** The Ephebe at the time of its discovery in 1925





FIGURE 5.3. Remains of the mineralized fabric

**FIGURE 5.4.** The Ephebe at the time of its discovery in 1925



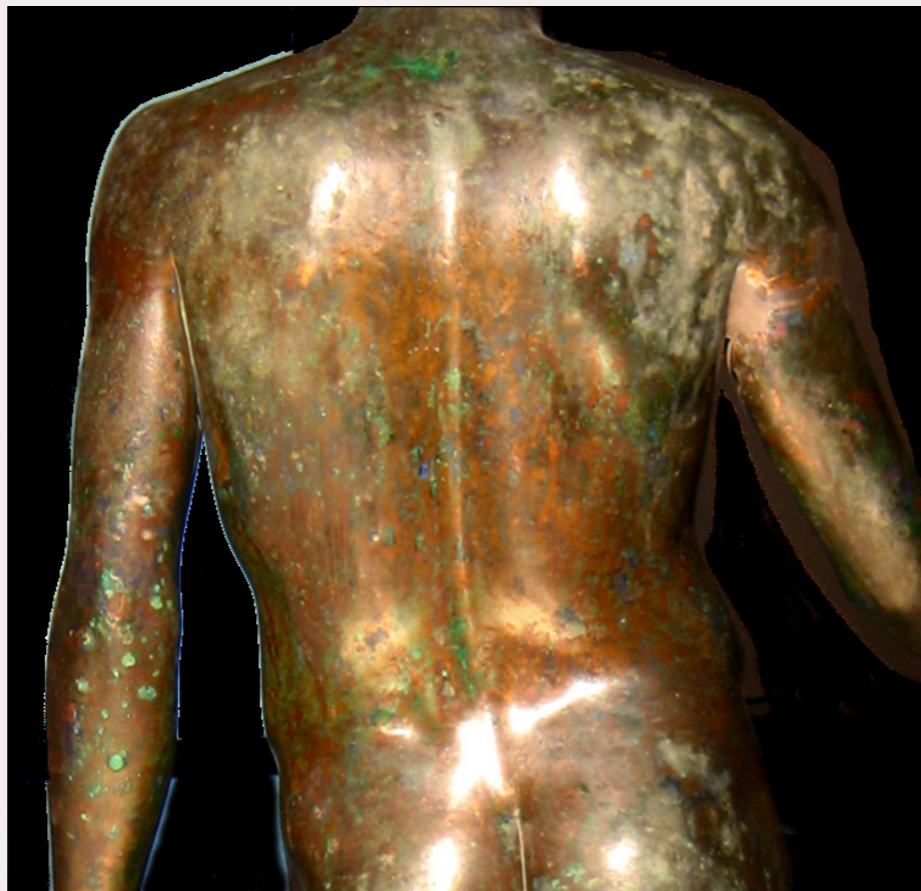
FIGURE 5.5. Flattening of the palm of the right hand



FIGURES 5.6a–b. Front and back view of the Ephebe in 1925, after restoration



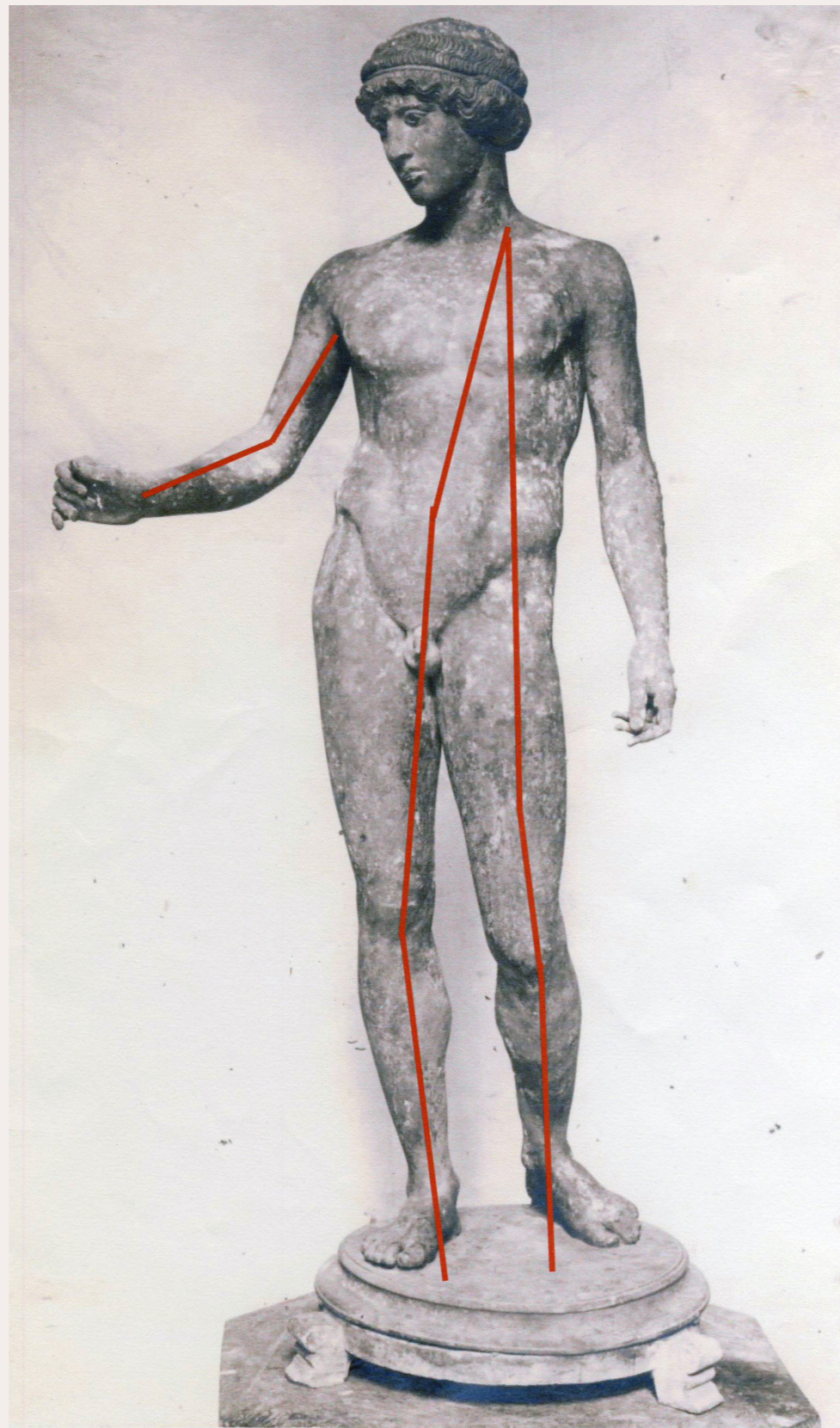
**FIGURE 5.7.** Abrasion due to the aggressive cleaning carried out in 1925





**FIGURE 5.8.** Internal armature (brass bars) inserted through legs in 1925





**FIGURE 5.9.** Arrangement of internal armature inserted in 1925

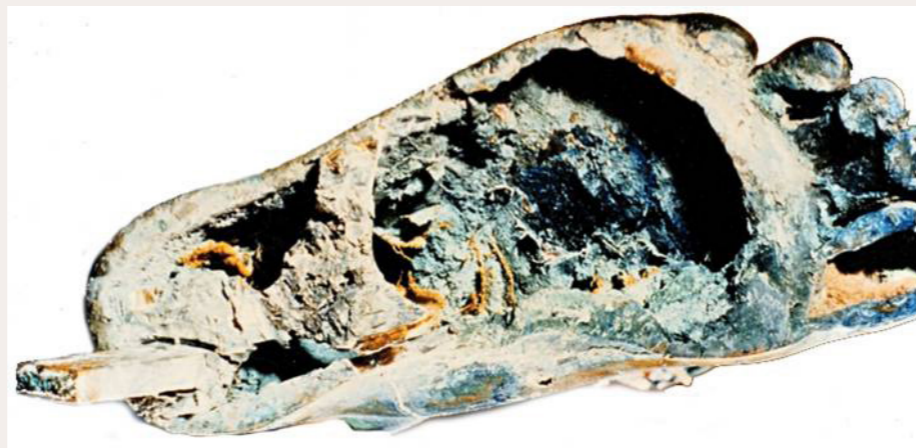
**FIGURE 5.10.** Upper end of one of the brass bars, wrapped with fabric and attached to the bronze with cement



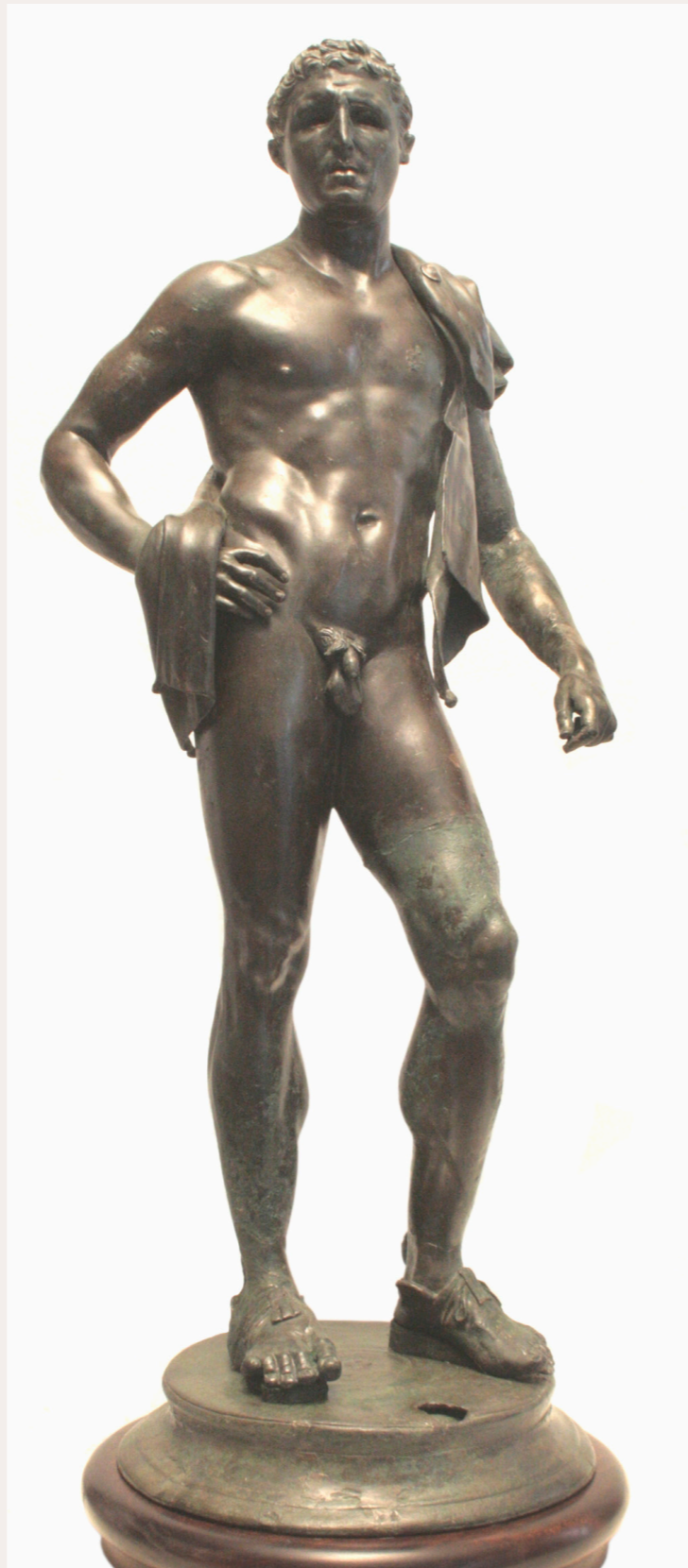


FIGURE 5.11. Ephebe's thigh filled with cement

**FIGURE 5.12.** Remains of sateen found inside Ephebe's right foot



**FIGURE 5.13.** Bronze statuette of Alexander I Balas (?).  
H. (with base) 76.5 cm (30<sup>1</sup>/<sub>8</sub> in.). Naples, Museo Archeologico Nazionale (126170)



**FIGURE 5.14.** Alexander I Balas: part of thigh, joined with cement



FIGURE 5.15. Right leg of the Ephebe during conservation





**FIGURE 5.16.** Ephebe's left leg during conservation: traces of the wax-to-wax join between separate sections are visible as the ridge in the center of the image.



**FIGURE 5.17.** Underside of Ephebe's left foot, showing enlargement of space for pin at the heel



**FIGURE 5.18.** Brass plates and screws used in the reassembly of right arm





FIGURE 5.19. Join between shoulder and right arm

**FIGURE 5.20.** Wood support inserted into the neck  
in 1925

